

TEKULIMA

NENTUTHUKO

ISSUE 16



**"HOUSEHOLDS MUST PLAY A PART
IN FOOD PRODUCTION" – says MEC**

SHEP PROJECTS MONITORED



agriculture, rural development,
land & environmental affairs

MPUMALANGA PROVINCE
REPUBLIC OF SOUTH AFRICA



Table of Contents

03	EDITOR IN CHIEF'S NOTE
04 – 05	HOUSEHOLDS MUST PLAY A PART IN FOOD PRODUCTION
06	STORM CAUSES SEVERE DAMAGE TO AGRIHUB INFRASTRUCTURE
07	TRAINING ON INDIGENOUS KNOWLEDGE SYSTEM ON CLIMATE CHANGE
08	DIRCO SCOUTS MP PROJECTS FOR INTERNATIONAL MARKET
09	WASTE PICKERS ATTEND EMPOWERMENT WORKSHOP
10	PROGRESS MONITORED CLOSELY AT SHEP PROJECTS
11	BAKGATLA COOP IMPRESSIVE
12	MATSAMO CPA MAKING WAVES
13	MP, KZN AND eSWATINI COLLABORATE IN THE FIGHT AGAINST ANIMAL DISEASES
14	UNIVENDA STUDENTS SPENDS TIME WITH BUSHBUCKRIDGE FARMERS
15	GLENCORE DONATES LIVESTOCK MEDICATION TO KRIEL FARMERS
16	TRAINING THE SMART AGRICULTURE BOX TRAINERS
17	RECYCLING BINS DONATED TO WASTE-INFESTED KWAMHLANGA
18	DONKERHOEK WATER SOURCE PROJECT LAUNCHED
19	COMPOSTING
20	RESEARCH CORNER
21	CROP ROTATION

EDITOR: Zanele Shabangu **SUB-EDITOR:** Bheki Nyathikazi

COMMUNICATORS: Andile Shabangu, Celani Ndude, Patrick Nyathi, Sthembile Mohlala, Gugu Nkosi, Mbalenhle Zulu and Portia Nkosi

NR COMMUNICATORS: Zinhle Mtshali, Gugulethu Mdlalose, Dimpho Chikota, Manteke Makola, Mangoba Dlamini, Thembisile Masilela, Miemie Mkansi, Prudence Lubisi, Sandile Mohlala, Sibusiso Nyalunga

LAYOUT AND GRAPHIC DESIGN:
Graphic Designer: Muzi Mnisi | **Graphic Designer:** Goodness Sibiyi

EDITOR'S NOTE



For the past few months, we embarked upon a journey of bringing to the fore initiatives which deal with the upliftment and prolonged celebration of women, their achievements but most importantly the strides that government has made in ensuring that the rights of women become a reality. Celebrating women must not wait for Women's Month in August. It should be an everyday thing, in all spheres. In our case, we celebrate all women in agriculture and the environmental space, regardless of their positions in society, because we believe that there are omnipotent reasons why our most viable resources have been naturally placed in their hands, for nurturing.

It is with hopes and aspirations of building a better tomorrow for our farming communities both small scale and commercial, that I invite our readers to share in our triumphs and in doing so, call upon those who share our view to share in our key moments and ensure we continue to put our communities first.

The Department of Agriculture, Rural Development, Land and Environmental Affairs, is an essential service Department, a key player in closing economical gaps, and ensuring food security. Working together with our farmers, in the majority being women in subsistence and smallholder, we are confident that whatever challenges lie ahead, we have the capacity to come up with solutions and forge a way forward, and women have proven that they are equally fit to make that possible.

I Thank You.

“HOUSEHOLDS MUST PLAY A PART IN FOOD PRODUCTION” – says MEC



MEC BP Shiba addressing thousands of locals and farmers at the Solomon Mahlangu Stadium

The DARDLEA MEC Ms Busi Shiba marked the official start of the 2022 Planting Season at a farm outside Kwamhlanga in the Thembisile Hani Local Municipality on October 13. This was during the commemoration the Provincial World Food Day. Held under the Theme: *“Leave no one behind. Better Production, Better Nutrition, a Better Environment, and a Better Life For All”*, launching the 2022 Phezukomkhono Mlimi Planting Season was aimed at encouraging communities and households to play a part in food production to fight poverty and hunger.

Addressing thousands of locals and farmers at the Solomon Mahlangu Stadium, MEC Shiba promoted a smart-agriculture approach, which enables households to produce food, regardless of the size of their space, using new Climate Change-friendly methods. She also visited households in the area, to encouraged them on the importance of planting both fruit and indigenous

trees & maintaining food gardens using water-saving means, including a Climate Change & water-saving Smart Agriculture Box. World Food Day is held annually on October 16th.



MEC Shiba behind the wheels marking the start of the planting season

2022 PLANTING SEASON LAUNCH IN PICTURES



STORM CAUSES SEVERE DAMAGE TO AGRIHUB INFRASTRUCTURE



Damage caused on the Mkhondo Agri Hub

The DARDLEA MEC Ms Busi Shiba with HOD Mr Cain Chunda rushed to the Mkhondo Agri Hub to assess a trail of destruction caused by heavy storms that blew off the roof of the structure.

Infrastructure, crops, including some houses were not spared during the storm that took place in the first week of November.

MEC Shiba, who was acting Premier at the time, also went to check progress at the One Stop Centre construction site also in Mkhondo, where the Local Councillor & the Contractor shared their frustrations caused by high levels of vandalism and theft, which leads to delays in completing the structure.



TRAINING ON INDIGENOUS KNOWLEDGE SYSTEM ON CLIMATE CHANGE



Ms. Dudu Sibiyi addressing delegates

It came up at the training that there is limited understanding of indigenous knowledge in the context of Climate Change and its associated impacts. There's also less participation and involvement of indigenous people and knowledge in the formulation of Climate Change responses.

Going forward, the Provincial Stakeholders will be required to update Climate Change projects, collect and furnish the system with mitigation and adaptation-related data, through the DARDLEA and DFFE. The training was a collaboration between the DARDLEA, the Department of Forestry, Fisheries and the Environment, Amakhosi, the Council for Scientific and Industrial Research (CSIR), South African Weather Service and the South African Environmental Observation Network.

A two-day training of the Mpumalanga Provincial Stakeholders on the Developed Provincial Climate Change Information System was well-attended and turned out to be a great success. The workshop, held on 5-6 November in eMalahleni and informed by the RSA-EU knowledge exchange project, involved the consultation on the conceptualization of the Indigenous Knowledge Systems on Climate Change response, monitoring and evaluation. They used a Limpopo pilot project as a case study.



DIRCO SCOUTS MP PROJECTS FOR INTERNATIONAL MARKET



DIRCO team with DARDLEA senior officials at Ajuri farm in Barberton



A team from the Department of International Relations and Cooperation (DIRCO) visited a few DARDLEA-supported projects in Ehlanzeni District on November 28th, while on a fact-finding mission that's part of their diplomatic training to get a better understanding of the province for economic diplomacy.

They visited the vegetable-producing Barberton Fortune 40 Young Farmer Incubation project and Ajuri Macadamia Farm outside Umjindi, including the

Fortune 40 Aquaculture project in Mbombela. Their areas of responsibility include Japan and the Koreas, Angola and DRC, Southern and East Africa, the Indian Ocean Islands, Latin America and the Southern Core. All these, are potential markets for Mpumalanga farmers.

Meanwhile, the next day saw officials from the Department of Forestry, Fisheries and the Environment visiting a number of projects in Ehlanzeni to identify their needs, and figure out ways to assist them. Among the projects

visited was the Shiyalongubo Women's Aquaculture Project with seven earthen ponds on the hills of the Makhonjwa Mountains. They produce fresh fish and indigenous crops, but they have challenges.

"They came to MP to get a better understanding of the province for economic diplomacy."

WASTE PICKERS ATTEND EMPOWERMENT WORKSHOP

The Department collaborated with PETCO and Plastic-SA and conducted a week-long Waste Recycling Workshop in Msukaligwa and Dipaleseng Local Municipalities in mid-December, to empower the already running businesses of Waste Pickers, but also to encourage and motivate wanna-be Waste Pickers.

The workshop also aimed at educating small businesses about a variety of available opportunities that can help grow their businesses. Presentations at the workshop were on the recycling business, how to register and benefit from Integrated Waste Management Systems and Plastic SA. Recycling is good for the environment in that it conserves energy and natural resources, reduces air and water pollution. It also reduces greenhouse gases.



Waste pickers posing for a group picture after the workshop

PROGRESS MONITORED CLOSELY AT SHEP PROJECTS



Japanese delegates with DARDLEA officials and local farmers in Hazyview

Officials from the Japanese International Cooperative Agency (JICA), with DALRRD and DARDLEA visited the Smallholder Horticulture Empowerment and Promotion (SHEP) projects in kaShabalala near Hazyview early in October to monitor progress and challenges experienced since the implementation of SHEP, but also to take lessons and improve on them.

Buhlebesivuno Farmin Nyongane is one of the projects visited by the Japanese delegates. With 10 beneficiaries, Buhlebesivuno produces vegetables and grain on a 5,5 hectare plot, supplied to Hazyview Super Spar and local market. It is one of the projects that successfully implemented SHEP, and has since inspired neighbouring farmers to want to be part of the programme.

The SHEP approach is one of the extension methods that focuses on market survey, and it supports farmers to produce TO sell, and not to produce AND sell. The SHEP approach is Market-Orientated, meaning it encourages farmers to study their markets first, before planting, to secure a successful farming business.



BAKGATLA COOP IMPRESSIVE



HOD Mr Cain Chunda during the meeting at Bakgatla Primary Coop

The Nkangala House of Traditional and Khoisan Leaders' Committee on Justice, Land, and Agriculture got impressed during an oversight visit to the Marapyane Bakgatla Primary Cooperative in November. Led by Kgoshi EP Chaane, the visit to the agricultural project was aimed at monitoring progress since the unemployed youth were given the 145 ha land by the Bakgatla Ba Mocha Traditional Authority in Marapyane.

The DARDLEA offered support and piloted the project as a Grain Corridor under the Greening Mpumalanga Programme from 2021. This included land clearing, comprehensive training and capacity building, production inputs, and mechanisation services. Interestingly during the visit, Marapyane Bakgatla - whose primary goal is to grow maize and sunflower - were hard at work planting their first yellow maize for which they have already secured a market at Raks Milling.



Committee members engaging senior DARDLEA officials at the Bakgatla Primary Coop

MATSAMO CPA MAKING WAVES



Employees packing litchis above and bananas below before distribution

The Legislature's Portfolio Committee on Agriculture went to the Matsamo CPA to monitor the level of support and progress that the DALRRD and DARDLEA have provided. The oversight visit was also aimed at addressing challenges raised by the CPA members, which includes the verification process for beneficiaries, which impedes an Annual General Meeting.

The Matsamo CPA was established in 2007. They produce bananas, sugarcane, citrus fruit, Litchis, vegetables, game farming and livestock. A few months before the visit, the Minister for Agriculture, Land Reform and Rural Development had approved a Post-Settlement grant of R33 million for Matsamo CPA, that has since received farming equipment that include 4 tractors, 2 bakkies, boom spray and a TLB. The MPLs also visited the Laughing Waterfall Farming Project that produces Litchis, and the banana-producing Tomahawk Farm and Joint Venture project.



MP, KZN AND eSWATINI COLLABORATE IN THE FIGHT AGAINST ANIMAL DISEASES

The Veterinary Services hosted a bilateral meeting early in December between South Africa and Eswatini Veterinary Services in Ermelo. The meeting sought to strengthen animal disease control, especially cross border diseases between Eswatini, KwaZulu-Natal and Mpumalanga.

This, to ensure that diseases like Foot and Mouth, Rabies, African Swine Fever, Avian Influenza, Bovine Contagious

Pleuropneumonia, Tuberculosis and Brucellosis, amongst others, are NOT given a chance to spread between the two countries.

The delegations were led by eSwatini's Dr Xolani Dlamini, DALRRD's Dr Mpho Maja and Dr Mphane Molefe, KwaZulu Natal's Dr Sekhukhune and Mpumalanga's Chief Director for Veterinary Services, Dr Lucas Cele.



MP, KZN and Kingdom of Eswatini Senior Vet Services officials

UNIVENDA STUDENTS SPENDS TIME WITH BUSHBUCKRIDGE FARMERS



Univenda students with a local Bushbuckridge farmer

A group of 3rd year BSc in Agriculture students from the University of Venda visited several projects in the Bushbuckridge area in the first week of November, as part of an excursion and on-the-field experience. They interacted and engaged several local farmers and explored different methods of farming. Farmers shared information on farming methods using indigenous knowledge systems, while students presented the alternative smart agriculture farming methods.

The Univenda students visited the SAGAP-accredited Mwayi Farm Gazide run by Simphiwe Gazide, and Sibuyi Farm owned by Muxe Sibuyi under the Hoxani Irrigation Scheme. A South African Good Agricultural Practices (SAGAP) certificate qualifies a farmer to sell their produce to bigger markets such as Pick 'n Pay, Spar, Boxer, Shoprite, among others.

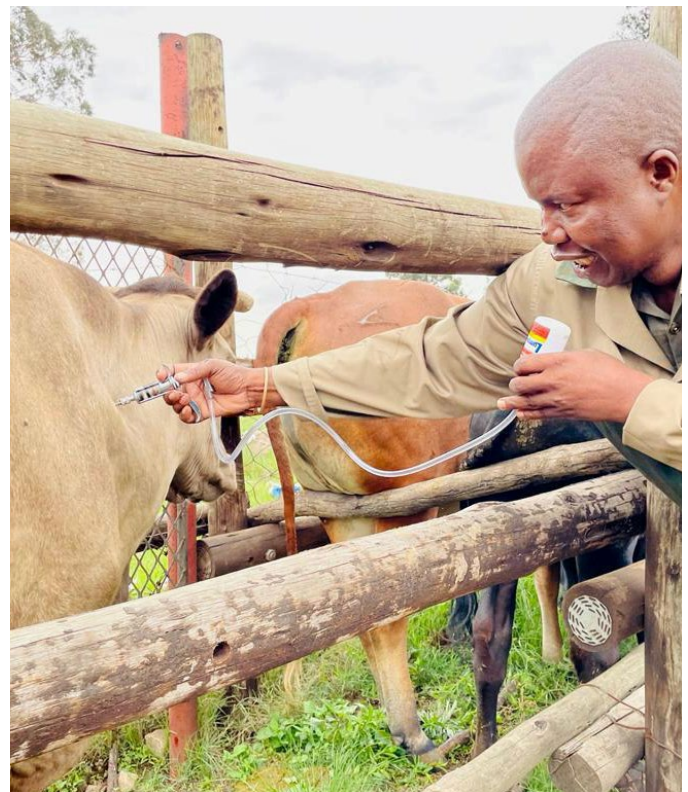


GLENCORE DONATES LIVESTOCK MEDICATION TO KRIEL FARMERS

Christmas came too early for Thubelihle Communal Kraal farmers in Kriel in the eMalahleni Local Municipality when Glencore Mine, working with the DARDLEA, donated medication as part of its community development programme.

This donation followed a need assessment conducted by the DARDLEA. About 65 livestock farmers received medication for internal and external parasites in pigs, sheep, and goats as well as LumpyVax, which is intended to prevent cattle from developing Lumpy Skin Disease - a cattle skin condition that is common during rainy season.

Our Veterinary Animal Health and Animal Production conducted demonstrations, thereby vaccinating about 100 cattle in the process. Farmers said the donation will relieve and alleviate their expenses on medication for a good eight months.



Thubelihle Communal Kraal farmers with various farming products

TRAINING THE SMART AGRICULTURE BOX TRAINERS



Officials setting up the SMART Boxes



Training that forms part of preparations towards a smooth launch and rolling-out of the SMART Agriculture Boxes (SAB) got underway in the 3rd quarter of 2022/23, to ensure that Agric Advisors and Environmental Officers are able to share the necessary tips on the proper use of the Box and its Mobile App to would-be beneficiaries. The trainings have already taken place in Ermelo, Thulamahashe, Mdala Environmental Centre and Nkomazi.

The practical training focuses on how to set the box up and ready, how to do intensive intercropping, pest control, and how to measure the organic compost needed per box.

Meanwhile, officials from Phezukomkhono Mlimi and Climate Change programmes frequently visit the Kotalwa Kwempilo Compost Project at the Amsterdam Environmental Centre, to monitor the performance of the compost produced at the project. Kotalwa Kwempilo's compost is organic, therefore is the best in controlling pests, and will be distributed to beneficiaries of the Smart Agriculture Box.

RECYCLING BINS DONATED TO WASTE-INFESTED KWAMHLANGA



Mountain View community utilising their new recycle bins

15 Recycling Bins were donated by WasteAid and the DARDLEA's Zonda Insila Programme at the Zusterhoek Bus Stop in Mountain View, Kwamhlanga in October. This, to inspire the local community to sort recyclable waste, while maintaining cleanliness and environmental health. Kwa-Mhlanga has since been identified as the hotspot for littering in the Thembisile Local Municipality, with illegal dumping and waste burning being the order of the day.

This initiative by WasteAid and ZIP will benefit the communities in Zone 1 to 5, with each community receiving three waste recycling bins.

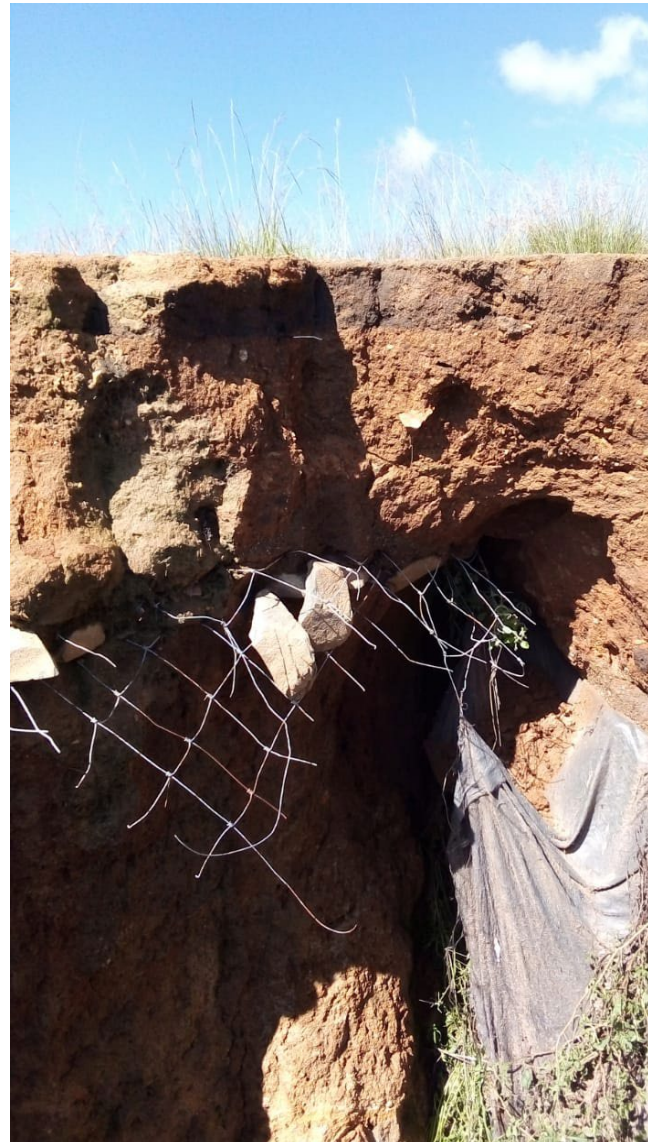
They will be controlled and monitored by the local Masibambisane Recycling, who will continually collect, sort, and transport waste to the buy-back centres on a monthly basis.



DONKERHOEK WATER SOURCE PROJECT LAUNCHED

The DARDLEA, with the World Wide Fund launched the Donkerhoek Water Source Project at the local community offices in October. The Water Source Project forms part of the WWF's Land Reform & Biodiversity Stewardship Programme, which seeks to capacitate communities residing near key water source areas on how to sustain natural resources which supply water to farms, cities and towns.

120 farmers and community members have since been capacitated by the WWF and Mpumalanga Tourism and Parks Agency (MTPA) on how to eradicate alien invasive plants, implement fire management, protect water sources and putting in place sustainable grazing plans.

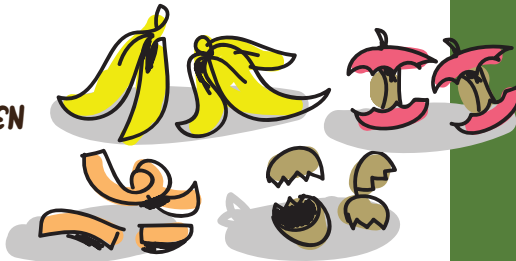


Donkerhoek community at the launch

COMPOSTING

PREPARE WASTE
INGREDIENTS

BROWN FOR CARBON
GREEN FOR NITROGEN



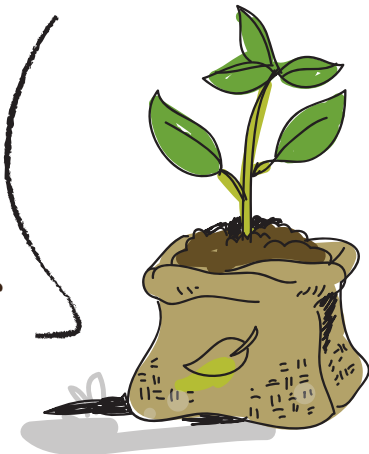
PUT TOGETHER
WASTE IN A PILE



KEEP COMPOST MOIST,
OCCASIONALLY TURN YOUR
COMPOST MIXTURE AND
ALLOW BREAKDOWN



WHEN MIXTURE IS
DARK WITH NO TRACE
OF FOOD OR WASTE
YOUR COMPOST
READY. ADD ONTO
LAWNS OR GARDENS



DID YOU KNOW THAT?

Recycling food waste and other decomposing organic matter into compost provides a range of environmental benefits including improving soil health, reducing greenhouse gas emissions, recycling nutrients and mitigating the impact of droughts.

Composting is also an important part of waste management since it reduces the waste that goes into the bin and to the landfill site, and the amount of gases in the atmosphere that causes our climate to change.

Let us help save the planet from climate change, biodiversity & nature loss, pollution and waste.



EVALUATION OF THE MEDIUM – DURATION GROWTH GROUNDNUT VARIETIES IN MPUMALANGA PROVINCE

Vilane N.M and Lengwati M.D

*Mpumalanga Department of Agriculture, Rural Development, Land and Environmental Affairs, Private Bag X 11318, Nelspruit 1200, South Africa.
Email: vilanem73@gmail.com*

INTRODUCTION

Today, groundnut (*Arachis hypogaea L.*) is one of the most important legumes grown in South Africa and a major crop grown by smallholder farmers in Mpumalanga. The plant is grown mainly for human consumption, the economic part being the kernel, which is either consumed or its oil extracted for culinary purposes (Weiss, 2000). The best soil for groundnut production is well-drained, light textured sandy or sandy loam that facilitates easy penetration of pegs and pod development. Groundnut is a major source of edible oil and vegetable protein in South Africa (Holbrook and Stalker, 2003).

MATERIALS AND METHODS

The field experiments were conducted during 2021 – 2022 cropping season at Roodepoortjie 25° 27' 9"S, 28°52' 36"E and the University of Mpumalanga Farm (25°25' 30"S, 30° 58' 14"E). Ten varieties were statistically laid out in a Randomized Complete Block Design (RCBD) with 3 replications of 9 metres long and 2 rows per plot in both locations. The inter row spacing of 70 cm and intra row spacing of 10 cm were used and seeds were placed at a depth of 5-7 cm. The observations were stand establishment, hundred seeds mass, shelling percentage and grain yield. The data collected were subjected to analysis of variance (ANOVA) and mean separation using Tukey's Honestly Significant Different (Tukey HSD) with the Statistix 10.0 software package.

RESULTS AND DISCUSSION

Different variety yield results were obtained from Roodepoortjie and Nelspruit, although similar varieties were planted in both locations. The highest four grain yielding varieties at Roodepoortjie were wiz; Anel (3417kg/ha), PC 481-k3 (3013 kg/ha), PC480-k14 (2950 kg/ha) and Kwarts (2752 kg/ha) figure 1. At Nelspruit highest four grain yielding varieties wiz; Kwarts (557 kg/ha), Akwa (431 kg/ha), Anel (410 kg/ha) and Akwaplus (406 kg/ha) figure 2. Furthermore, at Roodepoortjie the highest shelling percentage were recorded in variety (Kwarts) with 80% and the lowest in variety (GP 023) with 68%. Whereas at Nelspruit the highest shelling percentage were recorded in variety (PC 480-k14) with 69% and the lowest in variety (Kwarts) with 60%.

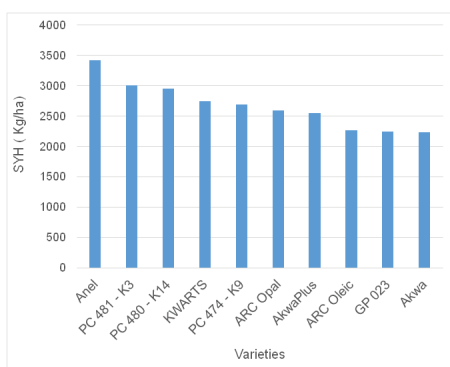


Figure 1. The seed yields in kilograms per hectare at Roodepoortjie (Nkangala)

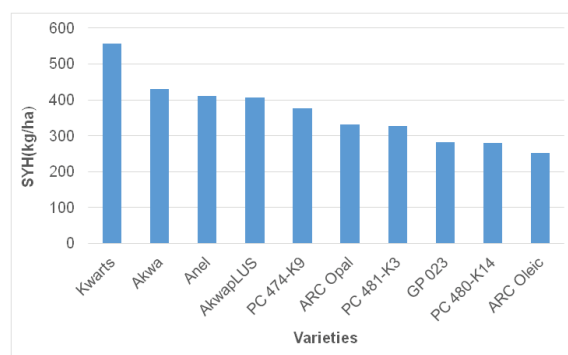


Figure 2. The seed yield in kilograms per hectare at Nelspruit

CONCLUSIONS

The outstanding varieties were selected based on their grain yield and other parameters such as days to maturity, number of seeds pod-1 and shelling %. These selected outstanding varieties will be introduced to the smallholder farmers in Mpumalanga Province.

REFERENCES

1. Holbrook CC, Stalker HT (2003) Peanut Breeding and Genetic Resources. Plant Breeding Reviews, 22: 297-356.
2. Weiss EA (2000) Oilseed Crops. 2nd edition. Blackwell Science. London, United Kingdom, pp 364.

CROP ROTATION



Growing the same crops year after year on the same land reduces the availability of certain nutrients and causes soil degradation.

Crop Rotation helps return nutrients to the soil, thereby improving yield and profitability over time.



WHERE TO FIND US

Head Office

Samora Machel Building, Floor
1&2
No 7 Government Boulevard

Private Bag X 11219
Riverside Park
Nelspruit 1200
Republic of South Africa

Tel: +27 13 766 6068
Email: Infodardlea@mpg.gov.za

Ehlanzeni District Office

Building 4, Aqua Street
Riverside Park

P.o Box 266
Nelspruit 1200
Republic of South Africa

Tel: +27 13 759 4000

Bohlabela Region

101 Main Road
Thulamahashe

Private Bag X 1321
Thulamahashe 1365
Republic of South Africa

Tel: +27 13 773 1192

Nkangala District Office

Ebhudlweni Building, Governement
Complex
KwaMhlanga 1022
Republic of South Africa

Private Bag x 4017
KwaMhlanga

Gert Sibande District Office

44 Church Street
Ermelo 2350
Republic of South Africa

Private x 9071
Ermelo 2350
Republic of South Africa

Tel: +27 (0)17 819 2076
Fax: +27 (0)17 811 0774

